

Article

Sliding Mode Controller and Lyapunov Redesign Controller to Improve Microgrid Stability: A Comparative Analysis with CPL Power Variation

Eklas Hossain ^{1,*}, Ron Perez ², Sanjeevikumar Padmanaban ^{3,*} , Lucian Mihet-Popa ⁴ , Frede Blaabjerg ⁵  and Vigna K. Ramachandaramurthy ⁶ 

¹ Department of Electrical Engineering & Renewable Energy, Oregon Tech, Klamath Falls, OR 97601, USA

² Department of Mechanical Engineering, University of Wisconsin-Milwaukee, Milwaukee, WI 53211, USA; perez@uwm.edu

³ Department of Electrical and Electronics Engineering, University of Johannesburg, Auckland Park 2006, South Africa

⁴ Faculty of Engineering, Østfold University College, Kobblerstredet 5, 1671 Kråkerøy-Fredrikstad, Norway; lucian.mihet@hiof.no

⁵ Centre for Reliable Power Electronics (CORPE), Department of Energy Technology, Aalborg University, 9000 Aalborg, Denmark; fbl@et.aau.dk

⁶ Institute of Power Engineering, Department of Electrical Power Engineering, Universiti Tenaga Nasional, Kajang 43000, Selangor, Malaysia; Vigna@uniten.edu.my

* Correspondence: eklas.hossain@oit.edu (E.H.); sanjeevi_12@yahoo.co.in (S.P.); Tel.: +1-541-885-1516 (E.H.); +27-79-219-9845 (S.P.)

Received: 11 September 2017; Accepted: 25 October 2017; Published: 24 November 2017

Abstract: To mitigate the microgrid instability despite the presence of dense Constant Power Load (CPL) loads in the system, a number of compensation techniques have already been gone through extensive research, proposed, and implemented around the world. In this paper, a storage based load side compensation technique is used to enhance stability of microgrids. Besides adopting this technique here, Sliding Mode Controller (SMC) and Lyapunov Redesign Controller (LRC), two of the most prominent nonlinear control techniques, are individually implemented to control microgrid system stability with desired robustness. CPL power is then varied to compare robustness of these two control techniques. This investigation revealed the better performance of the LRC system compared to SMC to retain stability in microgrid with dense CPL load. All the necessary results are simulated in Matlab/Simulink platform for authentic verification. Reasons behind inferior SMC performance and ways to mitigate that are also discussed. Finally, the effectiveness of SMC and LRC systems to attain stability in real microgrids is verified by numerical analysis.

Keywords: sliding mode control; Lyapunov redesign control; constant power load; robustness analysis; variation of CPL power; microgrid stability

1. Introduction

Since the beginning of the 21st century, the conventional utility grid system has started to be replaced by the newly adopted microgrid system due to several reasons. Microgrid systems offer environment-friendly distributed generation by local renewable energy resources [1–10]. From an economic aspect, it reduces the overall cost (combining the generation, transmission, and distribution) considerably. Apart from that, it is a great tool to distribute electricity to those areas where the utility grid-based electricity cannot be reached. However, though a microgrid is easy to construct and implement, the stability maintenance of the microgrid system is a matter of concern to system engineers, professionals, and researchers globally. The stability of the microgrid system is basically hampered

due to the CPL (constant power load) based load in the system. The CPL exhibits negative incremental load characteristics (shown in Figure 1) and easily creates exponential and random oscillation in the system, thus instability is forming in the system [2,11–13]. For compensating the instabilities caused by CPL, a lot of research has been conducted. Research regarding instabilities in microgrids started during 1998–1999, but as the electrification industry and microgrid technology grew gradually, this issue drew attention of researchers all over the world. Research timeline on CPL compensation is shown in Figure 2. The increase in research on microgrid is easily noticeable from this figure. Figure 3 shows the research work done on CPL compensations techniques in different countries. The United States of America is currently in the lead, but China, Norway, France, as well as India are churning up significant contributions.

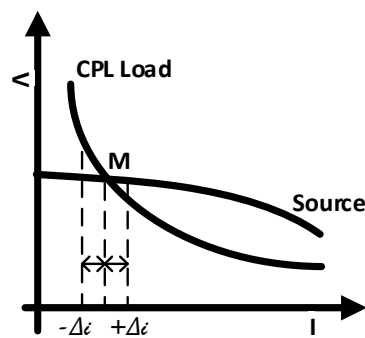


Figure 1. Negative impedance characteristic of constant power load.

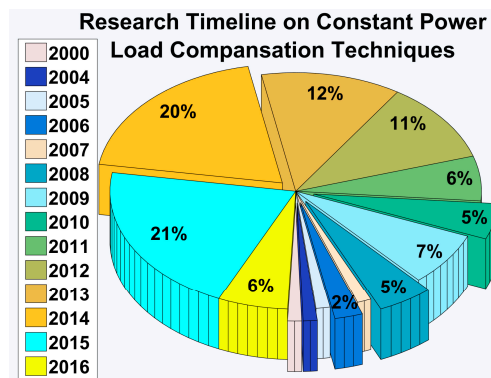


Figure 2. Research timeline on Constant Power Load Compensation Techniques, considering the published research works.

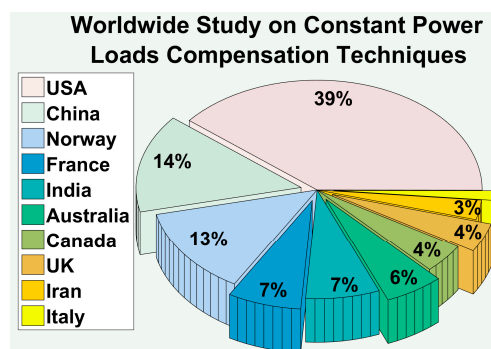


Figure 3. Contributions of different countries on Constant Power Load Instability Compensation research.

Several investigations have been conducted by researchers and system engineers all over the globe to ameliorate the stability scenario of microgrids. For direct current (DC) microgrid, several researches are reviewed at [14–17]. Sliding Mode Control (SMC) and Lyapunov Redesign Control (LRC) techniques are two of the most prominent nonlinear control techniques used to improve microgrid stability [18,19]. Prior to this, several studies have been carried out on the SMC technique. The stability characteristics become harder to establish in large systems. Sliding mode control has been applied in direct current (DC) microgrids to use the actual nonlinear models [20,21]. It has been accomplished by discovering a sliding surface and employing a sliding mode controller, which is discontinuous, for making the system voltage more stable. Later on, in [22], Vinicius Stramosk and Daniel J. Pagano presented a novel Sliding Mode Controller for precise governing of DC bus voltage. In like manner, a non-linear sliding surface is put forward by the two Indian Institute of Technology Jodhpur researchers: Suresh Singh and Deepak Fulwani in [23–25] to moderate CPL instability. The non-linear surface that they had proposed confirmed maintaining the constant power by the converter in practice. In this way, the proposed controller succeeded in mitigating the oscillating effect of the CPL of Point of Loads (POL) which are tightly regulated, and assured that the DC microgrids will operate stably under several disturbance conditions. Researchers Aditya R. Gautam et al. demonstrated, in [23], a robust sliding mode control technique to examine CPL instability. In like manner, in the case of alternating current (AC) microgrid, several researches have been reviewed in [12,26–31].

To achieve better controlled performance for polynomial nonlinear systems, the Lyapunov redesign of adaptive controller has been implemented by Qian Zheng and Fen Wu in [32]. Apart from the microgrid system, Wen-Ching Chung et al has implemented the Lyapunov redesign technique in vehicle dynamics to experience better steering control [33]. Then, Attaullah Y. Memon et al, in [34], used conditional servomotor to experiment with output control of a nonlinear system. In this course, they have implemented the Lyapunov redesign control technique. There are three basic compensation techniques to handle the microgrid instability: (i) feeder side compensation technique, (ii) intermediate circuitry based compensation technique, and (iii) load side compensation technique. In this paper, the storage-based load side compensation technique is adopted due to superior robustness and cost effectiveness among these techniques [35–42]. Adopting storage-based load side compensation in this paper, a comparative performance analysis will be presented for SMC and LRC techniques with the variation of the CPL power. The following are the contributions of this paper: besides modeling of the storage-based load side compensation technique (Section 2), SMC and LRC theories will be presented (Section 3), the robustness of the SMC and the LRC technique will be presented with the variation of CPL power load (Section 4). Then, the comparative performance analysis will be presented between SMC and LRC technique (Section 5) that will justify why the Lyapunov Redesign Control technique shows better robustness than the former one in microgrid application with dense CPL loaded condition. Reasons behind inferior SMC performance and ways to mitigate them will be discussed in Section 6. Section 7 will present numerical analysis of the control systems in real microgrid situations which verifies their effectiveness. Finally, the conclusion will be drawn in Section 8.

2. Modeling Microgrid with CPL

To mitigate perturbation caused by CPL loads, a compensation technique at the load side is the rational choice rather than compensating at the feeder side or using the intermediate circuitry approach. The load side compensation technique does required manipulation at the load side of the system to shield it from experiencing the effects caused by constant power loads. To elucidate this method, schematic models of storage-based real power compensation and reactive power compensation techniques (load side) are presented below in Figures 4 and 5 [18].

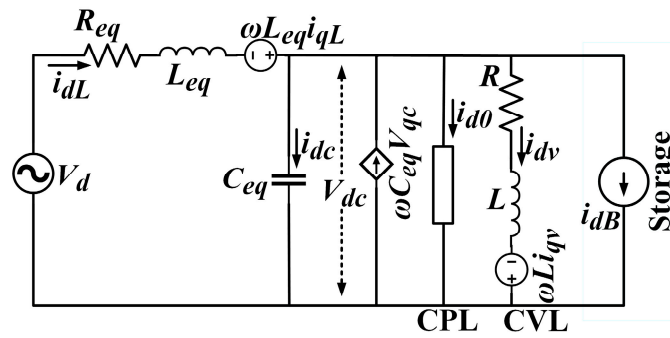


Figure 4. Real power compensation method at the load side, modeled for *d*-axis.

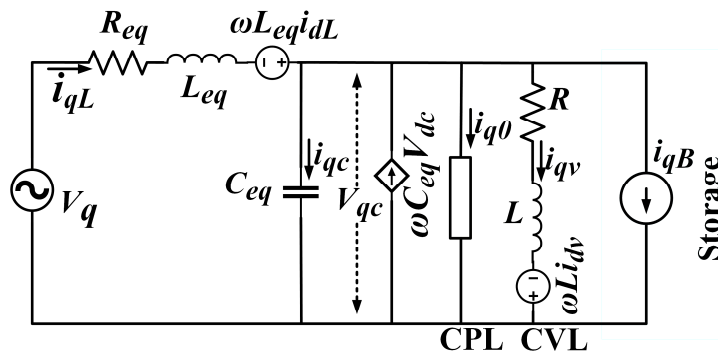


Figure 5. Reactive power compensation method at the load side, modeled for *q*-axis.

From the dq-axis models demonstrated above, the combined state space equation of the espoused load side compensation technique is shown in Equation (1) [19].

$$\begin{bmatrix} \frac{di_{dL}}{dt} \\ \frac{di_{qL}}{dt} \\ \frac{dV_{dc}}{dt} \\ \frac{dV_{qc}}{dt} \\ \frac{di_{dV}}{dt} \\ \frac{di_{qV}}{dt} \end{bmatrix} = \begin{bmatrix} \omega i_{qL} - \frac{R_1}{L_1} i_{dL} - \frac{V_{dc}}{L_1} + \frac{V_d}{L_1} \\ -\omega i_{dL} - \frac{R_1}{L_1} i_{qL} - \frac{V_{qc}}{L_1} + \frac{V_q}{L_1} \\ \omega V_{qc} + \frac{1}{C} i_{dL} - \frac{1}{C} \frac{P_O}{V_{dc}} - \frac{1}{C} i_{dV} - \frac{1}{C} i_{dB} \\ -\omega V_{dc} + \frac{1}{C} i_{qL} - \frac{1}{C} \frac{Q_O}{V_{qc}} - \frac{1}{C} i_{qV} - \frac{1}{C} i_{qB} \\ \omega i_{qV} + \frac{1}{L} V_{dc} - \frac{R}{L} i_{dV} \\ -\omega i_{dV} + \frac{1}{L} V_{qc} - \frac{R}{L} i_{qV} \end{bmatrix}, \tag{1}$$

3. Introduction to SMC and LRC

Sliding Mode Control (SMC) is a type of Variable Structure Control (VSC) in control theory. It gets switched from one continuous structure to a different one, based on the current state-space location. That makes SMC a variable structure control method. Its various control structures are configured to move the trajectories to a switching condition all the time, and therefore, the final trajectory will not be wholly within a single control structure. Instead of that, the final trajectory will slide along the control structure boundaries. The system’s motion while sliding along such boundaries is known as a Sliding Mode. The geometrical locus involving the boundaries is known as the sliding (hyper) surface. The sliding surface is defined by $\sigma = 0$, and after the limited time when the trajectories of the system have reached the surface, the sliding mode along the surface begins.

3.1. Sliding Mode Controller (SMC)

3.1.1. Control Statement of Sliding Mode

Considering a nonlinear dynamic system affine in control:

$$\dot{\bar{x}}(t) = f(\bar{x}, t) + B(\bar{x})\bar{u}(t), \quad (2)$$

$$\bar{x}(t) \in \mathfrak{R}^n, \bar{u}(t) \in \mathfrak{R}^m, f(\bar{x}, t) \in \mathfrak{R}^n, B(\bar{x}) \in \mathfrak{R}^{n \times m} \quad (3)$$

The components of the discontinuous feedback are given by:

$$u_i(t) = \begin{cases} u_i^+(\bar{x}, t) & \text{if } \sigma_i(x) > 0 \\ u_i^-(\bar{x}, t) & \text{if } \sigma_i(x) < 0 \end{cases} \quad i = 1, 2, \dots, m, \quad (4)$$

where $\sigma_i(x) = 0$ is the i -th component of the sliding surface, and $\sigma(x) = [\sigma_1(x), \sigma_2(x), \dots, \sigma_m(x)]^T = 0$ is the $(n - m)$ dimensional sliding manifold. The sliding mode control structure includes selecting a manifold or a hypersurface (i.e., the sliding surface) so that the system trajectory demonstrates desired performance when restricted within this manifold, and finding discontinuous feedback gains to make the trajectory of the system intersect and stay on the manifold. Vicinity of the switching surface can be viewed from Figure 6.

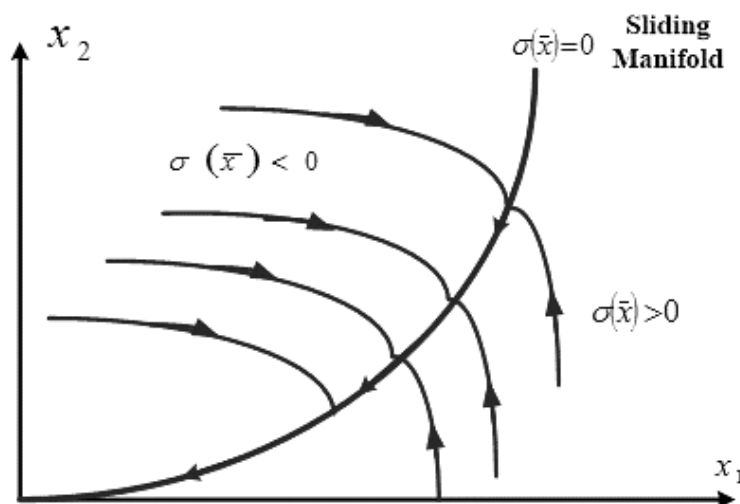


Figure 6. Vicinity of the switching surface.

A sliding mode exists, given that in the environs of the switching surface, $\sigma(x) = 0$, the state trajectory's velocity vector, $\dot{\bar{x}}(t)$, is always directed toward the switching surface. The control laws of the sliding mode not being continuous, it is able of driving trajectories to the sliding mode in finite time (i.e., the sliding surface's stability is superior to asymptotic). Nevertheless, the character of the sliding mode is taken on by the system (e.g., on this surface, the origin $x = 0$ can only possess asymptotic stability) once the trajectories reach the sliding surface.

3.1.2. Chattering

Due to the presence of external disturbance—noise and inertia of the sensors and actuators—the switching around the sliding surface occurs at a very high (but finite) frequency. The main consequence is that the sliding mode occurs in a small vicinity of the sliding manifold, which is called boundary layer, and which has a dimension that is inversely proportional to the control switching frequency. The effect of high frequency switching is known as chattering (shown in Figure 7).

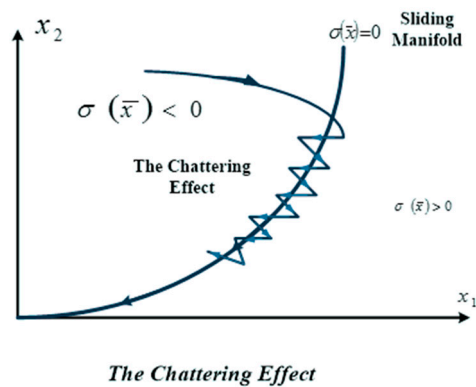


Figure 7. The chattering effect of Sliding Mode Controller (SMC).

The high-frequency switching propagate through the system exciting the fast dynamics and undesired oscillations that affect the system output. To prevent the chattering effect different techniques are used. One of the techniques is the use of continuous approximations of $sign(\cdot)$ using $sat(\cdot)$ or $tanh(\cdot)$ function in the implementation of the control law. A consequence of this method is that the invariance property is lost.

3.1.3. Chattering Reduction

Nowadays, typical approaches have been developed to reduce the amount of chattering. Slotine [43–45] based their original proposal on the generalized event of the n -th-order single input variant of nonlinear system: $x^{(n)} = f(x, t) + B(x, t)u$; here x is the state variable; $x = [x, \dot{x}, \ddot{x}, \dots, x^{(n-1)}]$; $x^{(n)}$ is the x 's n -th-order derivative; B is the gain; f is a nonlinear function and u is the control input. Furthermore, a formula for the switching manifold of the above system and the distance between the state trajectory: s , is stated as: $s(t) = (\frac{d}{dt} + \lambda)^{(n-1)}\tilde{x}$; while $\lambda > 0$ is a design constant, and \tilde{x} is the tracking error defined as: $\tilde{x} = x - x_d$; whereas x_d is the state variable for the desired trajectory. Henceforth the corresponding switching manifold is: $s(t) = 0$. Meanwhile, Slotine also proposed to smooth the previously mentioned discontinuity via a thin boundary layer closely surrounding the switching manifold. In such case continuous control within this boundary layer was attained by changing the switching term in the control law to a saturation function. Although the system would be driven to the boundary layer, yet the trajectory would not be staying on the switching manifold and thus the sliding mode would not exist [46]. Later Hung and Gao [47] offered the technique of reaching mode and reaching law, which was based upon n -th-order m -input systems. To guarantee the state trajectory's attraction towards the switching manifold within the reaching mode, their suggestion was to control the reaching speed by applying certain reaching law. They put forward three certain kinds of reaching laws besides the general form. Among these types they claimed that the power rate reaching law would eliminate chattering and provide fast reaching as well: $\dot{s}_i = -k_i |s_i|^\alpha \text{sgn}(s_i)$. The reaching time T_i was deduced to: $T_i = \frac{|s_i(0)|^{1-\alpha}}{(1-\alpha)k_i}$, $i = 1, 2, \dots, m$; where \dot{s}_i was the reaching speed; \dot{s}_i was defined as according to Equations (6) and (7); $\dot{s}_i(0)$ was the initial value of \dot{s}_i ; $k_i > 0$ was the switching gain (in the i -th dimension), and $0 < \alpha < 1$. Yet typically it has been found that chattering cannot be totally eliminated by such method. The above approaches are bounded by defects. Besides, Luo & Feng's switching zone [48] appears mainly theoretical, whereas the Ground Validation System (GVS) of Hamerlan et al will have minimal effect on speed and position of the controlled subject [49].

3.2. Lyapunov Redesign Controller (LRC)

Unlike sliding mode controller (SMC), Lyapunov redesign controller, or LRC, is based only on Lyapunov function [50,51]. Consider a nonlinear system that is described by:

$$\dot{x} = f(x) + G(x)u, \quad (5)$$

where $x \in \mathfrak{R}^n$ is the state and $u \in \mathfrak{R}^m$ is the controlled input. Assuming the matrix $G(x)$ and the vector field $f(x)$ each has two components: an unknown part and a known nominal part. Therefore,

$$f(x) = f_0(x) + f^*(x), \quad (6)$$

$$G(x) = G_0(x) + G^*(x), \quad (7)$$

where f_0 and G_0 represent the known nominal plant, and f^* , G^* characterize the uncertainty. Later let us assume the unknown portion to conform to a certain bounding condition. Additionally, it is assumed that the uncertainty fulfills a so-called matching condition:

$$f^*(x) = G_0(x)\Delta_f(x), \quad (8)$$

$$G^*(x) = G_0(x)\Delta_G(x), \quad (9)$$

The matching condition suggests that terms of uncertainty are present in the same equations with the control inputs u , and consequently, it will be possible to control them by controller. By replacing (6)–(9) in (5) we obtain:

$$\dot{x} = f_0(x) + G_0(x)(u + \eta(x, u)), \quad (10)$$

which includes all of the uncertainty terms, and is defined by:

$$\eta(x, u) = \Delta_f + \Delta_G u, \quad (11)$$

The Lyapunov redesign method works on the ensuing problem: supposing the equilibrium of the nominal model $\dot{x} = f(x) + G(x)u$ been made asymptotically stable uniformly by employing a feedback control law $u = p_0(x)$, the goal is to devise a control function $p^*(x)$, which is corrective in nature, so that the enhanced control law $u = p_0(x) + p^*(x)$ can stabilize the system (defined by Equation (10)) faced by the uncertainty (x, u) getting constrained by a known function.

Then, let us think about the specifics of the Lyapunov redesign technique, that is comprehensively offered for a more common case. Let us assume a control law: $u = p_0(x)$ to exist so that $x = 0$ becomes a stable equilibrium point which is uniformly asymptotically of the closed-loop nominal system $\dot{x} = f(x) + G_0(x)p_0(x)$. We also assume to know a Lyapunov function $V_0(x)$ that fulfills:

$$\alpha_1(\|x\|) \leq V_0(x) \leq \alpha_2(\|x\|), \quad (12)$$

$$\frac{\partial V_0}{\partial x} [f(x) + G_0(x)p_0(x)] \leq -\alpha_3(\|x\|), \quad (13)$$

where $\alpha_1, \alpha_2, \alpha_3 : \mathfrak{R}^+ \rightarrow \mathfrak{R}^1$ are stringently increasing functions that satisfy $\alpha_i(0) = 0$ and $\alpha_i(r) \rightarrow \infty$ as $r \rightarrow \infty$. These types of functions are sometimes called as class K_∞ functions. The term of uncertainty is presumed to satisfy the bound

$$\|\eta(x, u)\|_\infty \leq \bar{\eta}(t, x), \quad (14)$$

where the bounding function $\bar{\eta}$ is presumed to be known 'a priori', or accessible for measurement. At this point, let us proceed to designing the corrective "control component" $p^*(x)$ so that the system classes described by (10) and conforming to (14) are stabilized by $u = p_0 + p^*$. An approach adhering to the nominal Lyapunov function V_0 is used as the base to design the corrective control term, thus

the name ‘Lyapunov redesign method’ is justified. Considering the exact same Lyapunov function V_0 guaranteeing the nominal closed-loop system’s asymptotic stability, let us think about the time derivative of V_0 which is alongside the solutions of the full system (10). We have:

$$\begin{aligned}\dot{V}_0 &= \frac{\partial V_0}{\partial x} [f_0(x) + G_0(x)(u + \eta(x, u))] \\ &= \frac{\partial V_0}{\partial x} [f_0(x) + G_0(x)p_0(x)] + \frac{\partial V_0}{\partial x} G_0(x)p^*(x) + \eta(x, u) \leq -\alpha_3(\|x\|) + \omega(x)^T p^*(x) + \omega(x)^T \eta(x, u)\end{aligned}\quad (15)$$

where,

$$\omega(x) = \left[\frac{\partial V_0}{\partial x} G_0(x) \right]^T \in \mathfrak{R}^m, \quad (16)$$

which is a recognized function. We obtain by taking limits:

$$\begin{aligned}\dot{V}_0 &\leq -\alpha_3(\|x\|) + \sum_{i=1}^m \omega_i(x)p_i^*(x) + \|\omega(x)\| \|\eta(x, u)\|_\infty \\ &= -\alpha_3(\|x\|) + \sum_{i=1}^m \omega_i(x)p_i^*(x) + \bar{\eta}(x, t)|\omega_i(x)|\end{aligned}\quad (17)$$

The second term at the right-hand side of (17) can be made equal to zero if $p_i^*(x)$ is taken as:

$$p_i^*(x) = -\bar{\eta}(x, t)\text{sgn}(\omega_i(x)), \quad (18)$$

Every term of the corrective control vector $p^*(x)$ is chosen to be of the form $p^*(x) = \pm\bar{\eta}(x, t)$, where the sign of $p^*(x)$ is contingent on the sign of $\omega_i(x)$ and changes as $\omega_i(x)$ changes its sign. Substituting Equation (18) in Equation (17), the desired "stability" property is obtained.

$\dot{V}_0 \leq -\alpha_3(\|x\|)$; which infers that the closed-loop system is stable asymptotically. The augmented control law $u = p_0(x) + p^*(x)$ is discontinuous since each element $p_i^*(x)$ is discontinuous at $\omega_i(x) = 0$. Moreover, the discontinuity jump $\bar{\eta}(x, t) \rightarrow -\bar{\eta}(x, t)$ can have great magnitude if the bound of uncertainty $\bar{\eta}$ is large. As demonstrated earlier, chattering can be caused by discontinuities in the control law; hence smoothing the discontinuity is desirable and is expected to retain some degree the nice stability properties at the same time from the original discontinuous control law. It is achievable by replacing Equation (18) with

$$p_i^*(x) = -\bar{\eta}(x, t)\tanh\left(\frac{\omega_i(x)}{\varepsilon}\right), \quad (19)$$

where $\varepsilon > 0$ is a small design constant. It can be noted with ε approaching zero, the function $\tanh\left(\frac{\omega_i}{\varepsilon}\right)$ gets converged to the $\text{sgn}(\omega_i)$ function, which is discontinuous. By substituting Equation (19) in Equation (17) we obtain:

$$\dot{V}_0 \leq -\alpha_3(\|x\|) + \bar{\eta}(x, t) \sum_{i=1}^m (|\omega_i(x)| - \omega_i(x)\tanh\left(\frac{\omega_i(x)}{\varepsilon}\right)), \quad (20)$$

Using Lemma:

$$\dot{V}_0 \leq -\alpha_3(\|x\|) + \varepsilon m k \bar{\eta}(x, t), \quad (21)$$

α_3 being a strictly increasing class k_∞ function, for all $r > 0$ and any uniformly bounded function $\bar{\eta}$, there can exist a sufficiently small ε , so that $\dot{V}_0 \leq 0$ for x outside of a region $D_\varepsilon = \{x \mid V(x) \leq r\}$. Consequently, the trajectory becomes convergent to the invariant set D_ε . A Lyapunov function’s level surfaces are shown in Figure 8. It demonstrates the Lyapunov surfaces for increasing values of k . The condition $\dot{V}_0 \leq 0$ suggests that the a trajectory moves within the set $\Omega_k = \{x \in \mathfrak{R}^n \mid V(x) \leq k\}$ when it crosses the Lyapunov surface $V(x) = k$, and it cannot ever come out. The trajectory moves to an inner Lyapunov surface with smaller values of k when $V < 0$. The Lyapunov surface $V(x) = k$ reduces

back to the origin as k decreases, which shows that the approach of the trajectory to the origin with progressing time.

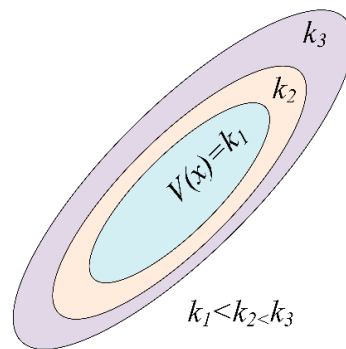


Figure 8. A Lyapunov function's level surfaces.

4. Implementation and Robustness Analysis of SMC and LRC

The intended outputs, or control objectives of the proposed controllers (each of SMC and LRC controller) is:

$$Y1 = V_{dC} \approx V_d \approx 480 \text{ Volt}$$

$$Y2 = V_{qC} \approx V_q \approx (\text{the lowest possible}) \text{ Volt}$$

Equation (22) gives the general system form affined within the control(s):

$$\dot{x} = f(x) + g(x)u, \tag{22}$$

4.1. Implementation and Robustness Analysis of Sliding Mode Controller against Parametric Uncertainties Including Uncertainties in Power of CPL

Sliding mode control, or SMC, is an advanced non-linear control technique featuring prominent characteristics of accuracy, robustness, and ease of tuning. By using the discontinuous control signal that forces the output of the system to 'slide' along with sliding surface or a distinct cross-section of the minimal behavior of the system, it can adjust the dynamics of the system in a way [47]. The state feedback control law is a discontinuous time function here, and can shift from one structure to the next depending on the prevailing location in space in a continuous manner. Hence, sliding mode control can be described as a control technique with variable structures. As the system's certain operation mode slides along the predetermined control structure boundaries, it is called the sliding mode. The geometrical locus, which consists of the boundaries, is called the system's sliding surface. To implement the sliding mode controller, the state space model equation below can be rewritten as Equation (23). In this section, the robustness will be enhanced by considering the uncertainties in active power of CPL (P_0) and reactive power of CPL (Q_0). When P_0 is unknown in case of designing u_1 , we will also consider x_3 as unknown to avoid any complexity. Similarly, in case of u_2 , we will also consider x_4 as unknown.

$$\begin{bmatrix} \dot{x}_1 \\ \dot{x}_2 \\ \dot{x}_3 \\ \dot{x}_4 \\ \dot{x}_5 \\ \dot{x}_6 \end{bmatrix} = \begin{bmatrix} \omega x_2 - \frac{R_1}{L_1} x_1 - \frac{x_3}{L_1} \\ -\omega x_1 - \frac{R_1}{L_1} x_2 - \frac{x_4}{L_1} \\ \omega x_4 + \frac{1}{C} x_1 - \frac{1}{C} \frac{P_0}{x_3} - \frac{1}{C} x_5 \\ -\omega x_3 + \frac{1}{C} x_2 - \frac{1}{C} \frac{Q_0}{x_4} - \frac{1}{C} x_6 \\ \omega x_6 + \frac{1}{L} x_3 - \frac{R}{L} x_5 \\ -\omega x_5 + \frac{1}{L} x_4 - \frac{R}{L} x_6 \end{bmatrix} + \begin{bmatrix} 0 \\ 0 \\ -\frac{1}{C} u_1 \\ -\frac{1}{C} u_2 \\ 0 \\ 0 \end{bmatrix} + \begin{bmatrix} \frac{r_1}{L_1} \\ \frac{r_2}{L_1} \\ 0 \\ 0 \\ 0 \\ 0 \end{bmatrix}, \tag{23}$$

Although P_0 and Q_0 are unknown, they satisfy $P_0 \leq \delta_P$ and $Q_0 \leq \delta_Q$ for some known bounds δ_P and δ_Q . The variation on CPL power can be summarized as:

$$d_P = \Delta_P / \Delta x_3, \quad (24)$$

$$d_Q = \Delta_Q / \Delta x_4, \quad (25)$$

where d_P represents the uncertainties of P_0 , d_Q represents the uncertainties of Q_0 , Δx_3 is the uncertainties in x_3 , and Δx_4 is the uncertainties in x_4 . As x_3 and x_4 are in the denominator, we need lower bounds of these parameters. Power uncertainty is expressed in term of current. We know that x_3 is the voltage of “d-axis” and it satisfies $\Delta x_3 \leq \delta_{x3}$ for some known, stringently positive bound δ_{x3} . Similarly, x_4 is the “q-axis” voltage. It satisfies $\Delta x_4 \leq \delta_{x4}$ for some known, stringently positive bound δ_{x4} . Overall, there are six unknowns with known bounds. The Sliding Mode Control input, u_1 will be designed first, with the similar method adopted to design u_2 , the other control input. Using the similar method as discussed in the previous section, let

$$e_1 = \int (x_3 - x_{3d}) dt, \quad (26)$$

$$e_2 = \dot{e}_1 = x_3 - x_{3d}, \quad (27)$$

$$\dot{e}_2 = \dot{x}_3 - \dot{x}_{3d} = f_3(x) + g_3(x)u_1 - \dot{x}_{3d}, \quad (28)$$

Expanding $f_3(x)$ and $g_3(x)$

$$\dot{e}_2 = \omega x_4 + \frac{1}{c} x_1 - \frac{1}{c} \frac{P_0}{x_3} - \frac{1}{c} x_5 - \frac{1}{c} u_1 - \dot{x}_{3d}, \quad (29)$$

Let, the sliding surface be

$$s = e_1 + e_2, \quad (30)$$

After differentiating and considering the uncertainties:

$$\dot{s} = \dot{e}_1 + \dot{e}_2, \quad (31)$$

$$\dot{s} = e_2 + (\omega(\hat{x}_4 + \Delta x_4) + \frac{1}{c}(\hat{x}_1 + \Delta x_1) - \frac{1}{c}(\frac{P_0}{x_3} + d_P) - \frac{1}{c}x_5 - \frac{1}{c}u_1 - \dot{x}_{3d}), \quad (32)$$

where $x_4 = \hat{x}_4 + \Delta x_4$. Then the total parametric uncertainty including uncertainty of CPL power can be represented as:

$$d = \frac{1}{c} \Delta x_1 + \omega \Delta x_4 - \frac{1}{c} d_P; \|d\| \leq dmax, \quad (33)$$

here $dmax$ is the limit of the total disturbance d .

$$dmax = \frac{1}{c} \delta_{x1} + \omega \delta_{x4} - \frac{1}{c} \delta_P / \delta_{x3}, \quad (34)$$

Then,

$$\dot{s} = e_2 - \frac{1}{c} x_5 - \dot{x}_{3d} + \omega \hat{x}_4 + \frac{1}{c} \hat{x}_1 - \frac{1}{c} \frac{P_0}{x_3} - \frac{1}{c} u_1 + d, \quad (35)$$

Let it be considered as the Lyapunov candidate function.

$$V = \frac{1}{2} s^2, \quad (36)$$

$$\dot{V} = s\dot{s} = s(e_2 - \frac{1}{c} x_5 - \dot{x}_{3d} + \omega \hat{x}_4 + \frac{1}{c} \hat{x}_1 - \frac{1}{c} \frac{P_0}{x_3} - \frac{1}{c} u_1 + d), \quad (37)$$

We use u_1 .

$$u_1 = -c \left[-e_2 + \frac{1}{c} x_5 + \dot{x}_{3d} - \omega \hat{x}_4 - \frac{1}{c} \hat{x}_1 + \frac{1}{c} \frac{P_0}{x_3} + v \right], \quad (38)$$

Now, we can obtain:

$$\dot{V} = s(d + v), \quad (39)$$

$\|d\| \leq dmax$, put into consideration, \dot{V} will be made negative by the subsequent discontinuous control, v . Consequently, it will guarantee stability.

$$v = -dmax * \text{sat}\left(\frac{s}{\varepsilon}\right); \varepsilon > 0, \quad (40)$$

In total, the control input is:

$$u_1 = -c \left[-e_2 + \frac{1}{c} x_5 + \dot{x}_{3d} + \frac{1}{c} \frac{P_0}{x_3} - \omega \hat{x}_4 - \frac{1}{c} \hat{x}_1 - dmax * \text{sat}\left(\frac{s}{\varepsilon}\right) \right], \quad (41)$$

Such an analysis is also presented here for u_2 , let,

$$e_3 = \int (x_4 - x_{4d}) dt, \quad (42)$$

$$e_4 = \dot{e}_3 = x_4 - x_{4d}, \quad (43)$$

$$\dot{e}_4 = \dot{x}_4 - \dot{x}_{4d} = f_4(x) + g_4(x)u_2 - \dot{x}_{4d}, \quad (44)$$

Taking the sliding surface as:

$$s = e_3 + e_4, \quad (45)$$

After differentiation and considering the uncertainties:

$$\dot{s} = e_4 + \left(-\omega(\hat{x}_3 + \Delta x_3) + \frac{1}{c}(\hat{x}_2 + \Delta x_2) - \frac{1}{c} \left(\frac{Q_0}{x_4} + d_Q \right) - \frac{1}{c} x_6 - \frac{1}{c} u_2 - \dot{x}_{4d} \right), \quad (46)$$

where $x_3 = \hat{x}_3 + \Delta x_3$. Then the total parametric uncertainty including uncertainty of CPL power can be represented as:

$$d = \frac{1}{c} \Delta x_2 - \omega \Delta x_3 - \frac{1}{c} d_Q; \|d\| \leq dmax, \quad (47)$$

where $dmax$ is the limit for d , the total disturbance.

$$dmax = \frac{1}{c} \delta_{x_2} - \omega \delta_{x_3} - \delta_Q / \delta_{x_4}, \quad (48)$$

Then,

$$\dot{s} = e_3 - \frac{1}{c} x_6 - \dot{x}_{4d} + \omega \hat{x}_3 + \frac{1}{c} \hat{x}_2 - \frac{1}{c} \frac{Q_0}{x_4} - \frac{1}{c} u_2 + d, \quad (49)$$

Considering this as the Lyapunov candidate function:

$$V = \frac{1}{2} s^2, \quad (50)$$

$$\dot{V} = s \dot{s} = s \left(e_3 - \frac{1}{c} x_6 - \dot{x}_{4d} + \omega \hat{x}_3 + \frac{1}{c} \hat{x}_2 - \frac{1}{c} \frac{Q_0}{x_4} - \frac{1}{c} u_2 + d \right), \quad (51)$$

We then use u_2 .

$$u_2 = -c \left[-e_3 + \frac{1}{c} x_6 + \dot{x}_{4d} - \omega \hat{x}_3 - \frac{1}{c} \hat{x}_2 + \frac{1}{c} \frac{Q_0}{x_4} + v \right], \quad (52)$$

Then, we can obtain:

$$\dot{V} = s(d + v), \quad (53)$$

Considering $\|d\| \leq dmax$, \dot{V} will be made negative by the subsequent discontinuous control, v . Consequently, it will guarantee stability.

$$v = -dmax * sat\left(\frac{s}{\varepsilon}\right); \varepsilon > 0, \quad (54)$$

In total, the control input is:

$$u_2 = -c \left[-e_3 + \frac{1}{c}x_6 + \dot{x}_{4d} - \omega\hat{x}_3 - \frac{1}{c}\hat{x}_2 + \frac{1}{c}\frac{Q_0}{x_4} - dmax * sat\left(\frac{s}{\varepsilon}\right) \right], \quad (55)$$

4.2. Implementation and Robustness Analysis of Lyapunov Redesign Controller against Parametric Uncertainties Including Uncertainties in Power of CPL

The LRC is based only on Lyapunov function. Its nominal controller is designed to ensure the nominal system or disturbance-free system to be stable by forcing the Lyapunov function derivative of the nominal system to be negative. If there is disturbance in the system, the discontinuous control is used alone to handle the disturbance. The discontinuous controller is formulated by redesigning the Lyapunov function of the nominal system. In the redesigning process, the disturbance is introduced to the Lyapunov function of the nominal system and then solved for the discontinuous control to overcome that disturbance and force the new derivative Lyapunov function or be negative and consequently, the system to be globally stable. It has some chattering issues because of the discontinuous controller. The chattering magnitude is dependent on the magnitude of $dmax$. Having large $dmax$ makes the system stable against large disturbance but it can cause larger chattering if it is set as a very large value. If the disturbance happens to be greater than the set $dmax$, the system can become unstable. But, the LRC has greater margin for stability because its nominal system is also ensured to be stable, thus provides better performance for large disturbance.

First of all, the Lyapunov Redesign Control input, u_1 will be designed, with the same approach followed next to design the other control input, u_2 . Using the similar method as discussed in last section, we introduce new state variables:

$$e_1 = \int (x_3 - x_{3d}) dt, \quad (56)$$

$$e_2 = \dot{e}_1 = x_3 - x_{3d}, \quad (57)$$

$$\dot{e}_2 = \dot{x}_3 - \dot{x}_{3d} = f_3(x) + g_3(x)u_1 - \dot{x}_{3d}, \quad (58)$$

Expanding $f_3(x)$ and $g_3(x)$:

$$\dot{e}_2 = \omega x_4 + \frac{1}{c}x_1 - \frac{1}{c}\frac{P_0}{x_3} - \frac{1}{c}x_5 - \frac{1}{c}u_1 - \dot{x}_{3d}, \quad (59)$$

Considering the uncertainties:

$$\dot{e}_2 = \omega(\hat{x}_4 + \Delta x_4) + \frac{1}{c}(\hat{x}_1 + \Delta x_1) - \frac{1}{c}\left(\frac{P_0}{x_3} + d_P\right) - \frac{1}{c}x_5 - \frac{1}{c}u_1 - \dot{x}_{3d}, \quad (60)$$

Then the total parametric uncertainty including uncertainty of CPL power can be represented as:

$$d = \frac{1}{c}\Delta x_1 + \omega\Delta x_4 - \frac{1}{c}d_P; \|d\| \leq dmax, \quad (61)$$

here $dmax$ is the limit of d , the total disturbance.

$$dmax = \frac{1}{c}\delta_{x1} + \omega\delta_{x4} - \frac{1}{c}\delta_P / \delta_{x3}, \quad (62)$$

Following the methodology of Lyapunov redesign, the over-all input is $u_1 = u_0 + v$; where u_0 is the nominal stabilizing controller and v is to handle the disturbances. We get the linear state space of error as in Equation (63):

$$\dot{e} = \begin{bmatrix} 0 & 1 \\ -k_1 & -k_2 \end{bmatrix} e, \quad (63)$$

Now, we define the desired Eigen values for the linearized system. Desired Eigen values would be -10 .

$$\text{Let, Equation (63) be written as } \dot{e} = Ae \text{ and } A = \begin{bmatrix} 0 & 1 \\ -k_1 & -k_2 \end{bmatrix}$$

Generalized Eigen values of matrix "A":

$$sI - A = \begin{bmatrix} s & -1 \\ k_1 & s + k_2 \end{bmatrix}, \quad (64)$$

$$|sI - A| = s^2 + k_2s + k_1, \quad (65)$$

Characteristic polynomial (desired):

$$(s + 10)(s + 10) = s^2 + 20s + 100, \quad (66)$$

Comparing Equations (65) and (66):

$$k_2 = 20, k_1 = 100$$

So, the values of k_1 and k_2 will become +100 and +20 respectively.

$$\dot{e} = \begin{bmatrix} 0 & 1 \\ -100 & -20 \end{bmatrix} e, \quad (67)$$

$$A = \begin{bmatrix} 0 & 1 \\ -100 & -20 \end{bmatrix}, \quad (68)$$

$$PA + A^T P = -I, \quad (69)$$

$$P = \begin{bmatrix} \frac{21}{8} & \frac{1}{200} \\ \frac{1}{200} & \frac{101}{4000} \end{bmatrix}, \quad (70)$$

$$V(e) = e^T P e, \quad (71)$$

$$w = 2e^T P G = 2 \begin{bmatrix} e_1 & e_2 \end{bmatrix} \begin{bmatrix} \frac{21}{8} & \frac{1}{200} \\ \frac{1}{200} & \frac{101}{4000} \end{bmatrix} \begin{bmatrix} 0 \\ 1 \end{bmatrix}, \quad (72)$$

$$w = \frac{1}{100}e_1 + \frac{101}{2000}e_2, \quad (73)$$

Then, we can choose the Lyapunov function for the nominal system or disturbance-free system to be:

$$V = \frac{1}{2}e_2^2, \quad (74)$$

$$\dot{V} = e_2 \dot{e}_2 = e_2 \left(\omega \hat{x}_4 + \frac{1}{c}x_1 - \frac{1}{c}\frac{P_0}{x_3} - \frac{1}{c}x_5 - \frac{1}{c}u_0 - \dot{x}_{3d} \right), \quad (75)$$

If we choose,

$$u_0 = -c \left[\frac{1}{c} \frac{P_0}{x_3} - \omega \hat{x}_4 + \frac{1}{c} x_5 + \dot{x}_{3d} - k_1 e_1 - k_2 e_2 \right], \tag{76}$$

then, $\dot{V} < 0$. The terms $[-k_1 e_1 - k_2 e_2]$ guarantee the global stability of the nominal system which is absent in SMC method. The overall system is stabilized using the discontinuous control in the presence of disturbances. Redesigning the Lyapunov function considering disturbances,

$$V = \frac{1}{2} e_2^2, \tag{77}$$

$$\dot{V} = e_2 \dot{e}_2 = e_2 \left(\left(\omega \hat{x}_4 + \frac{1}{c} x_1 - \frac{1}{c} \frac{P_0}{x_3} - \frac{1}{c} x_5 - \frac{1}{c} u_0 - \dot{x}_{3d} \right) + \left(\frac{1}{c} v + d \right) \right), \tag{78}$$

$\left[\omega \hat{x}_4 + \frac{1}{c} x_1 - \frac{1}{c} \frac{P_0}{x_3} - \frac{1}{c} x_5 - \frac{1}{c} u_0 - \dot{x}_{3d} \right]$ is assured to be negative, then the discontinuous control can be designed as:

$$v = -c * dmax * sat\left(\frac{dmax * \omega}{\mu}\right), \tag{79}$$

Then, the overall input is:

$$u_1 = -c \left[\frac{1}{c} \frac{P_0}{x_3} - \omega \hat{x}_4 + \frac{1}{c} x_5 + \dot{x}_{3d} - 100e_1 - 20e_2 - dmax * sat\left(\frac{dmax \left(\frac{1}{100} e_1 + \frac{101}{2000} e_2\right)}{\mu}\right) \right], \tag{80}$$

Therefore, there is $\mu > 0$ so that for $\mu < \mu^*$, the closed-loop system's origin is asymptotically stable globally according to absolute stability theorem. Similarly, we have Equation (81), when we design a controller for u_2 with same desired points.

$$u_2 = -c \left[\frac{1}{c} \frac{Q_0}{x_4} + \omega \hat{x}_3 + \frac{1}{c} x_6 + \dot{x}_{4d} - 100e_3 - 20e_4 - dmax * sat\left(\frac{dmax \left(\frac{1}{100} e_3 + \frac{101}{2000} e_4\right)}{\mu}\right) \right], \tag{81}$$

where,

$$e_3 = \int (x_4 - x_{4d}) dt, \tag{82}$$

$$e_4 = \dot{e}_3 = x_4 - x_{4d}, \tag{83}$$

$$d = \frac{1}{c} \Delta x_2 - \omega \Delta x_3 - \frac{1}{c} d_Q; \|d\| \leq dmax = \frac{1}{c} \delta_{x2} - \omega \delta_{x3} - \delta_Q / \delta_{x4}, \tag{84}$$

5. Results

Here, the parameters and the parametric values regarding the simulation done for comparative analysis by varying the CPL power have been shown in Table 1.

Table 1. Table of Parameters.

Parameter	Value	Parameter	Value
Ω	60 Hz	δ_{x4}	100 V
X_3	600 V	δ_P	30 kW
X_4	50 V	δ_Q	2 kVar
d_P	50 A	ρ_{x3}	200 V
d_Q	20 A	ϵ	100
δ_{x3}	1000 A	Req	0.25 Ohm
Leq	0.5×10^{-3} H	Ceq	10×10^{-6} F
R_{CVL}	15 Ohm	L_{CVL}	5×10^{-3} H
R_B	10 Ohm	C_B	1×10^{-6} F
L_B	1×10^{-3} H		

In Figure 9a,b, performance comparisons have been illustrated between SMC (colored in blue) and LRC (colored in green) for d -axis output voltage and q -axis output voltage respectively. The control objective for d -axis output voltage has been considered as 480 Volt, for normal conditions—where the variance value has been set as 10% to simulate noise. From Figure 9a, it is evident that the LRC controller shows considerably superior performance than that of the SMC controller, as its output stayed closer to the control objective. For q -axis output voltage, the control objective has been considered as low as possible and negligible in practice. In Figure 9b, the q -axis output voltage fluctuates more in the case of the SMC controller than that of the LRC controller. To determine the controller behaviors in a very noisy environment, more noise is added by setting the variance value as 100%, and noise rejection capabilities of SMC and LRC are tested. The results are shown in Figure 10a,b, which demonstrate LRC's superior capability to stick to the reference value with close proximity, whereas SMC has fluctuations of great magnitudes. For nonlinearity, LRC is capable of attaining the reference d -axis value with negligible time-delay, but SMC needs some time to reach that (Figure 11a). However, for q -axis, both controllers exhibit a similar performance (Figure 11b). In case of parametric uncertainties, LRC again proves to be the better suited one, displaying less fluctuations than SMC to maintain the control objective (Figure 12a,b). Hence, LRC offers appreciable stability considering CPL power variation and parametric uncertainties. In Figure 13a,b, performance comparisons have been presented between SMC (blue colored) and LRC (green colored) in the case of d -axis control input current, $I_d (u_1)$ and q -axis control input current, $I_q (u_2)$ respectively considering CPL power variation and parametric uncertainties. Here, the more the fluctuation in control input current, the more the stress will be imposed on the storage system to compensate, consequently degrading the storage performance and overall life time. This situation, in practice, makes it harder to retain microgrid stability. The mean squared errors (MSE) obtained from these analyses for both SMC and LRC controllers are presented in Table 2. It is obvious from the presented values that LRC is the better controller, and in a noisy environment, SMC is no match for LRC, as the former displays error significantly greater than LRC. This observation also leads to believe that, for practical applications, LRC can provide better performance than LRC. Therefore, from the comparative analysis presented here, the Lyapunov Redesign Controller shows better performance to retain system stability in face of CPL power variation. Hence, the LRC controller is preferred to be adopted for storage-based load side compensation technique for microgrid stability improvement with dense CPL loads present.

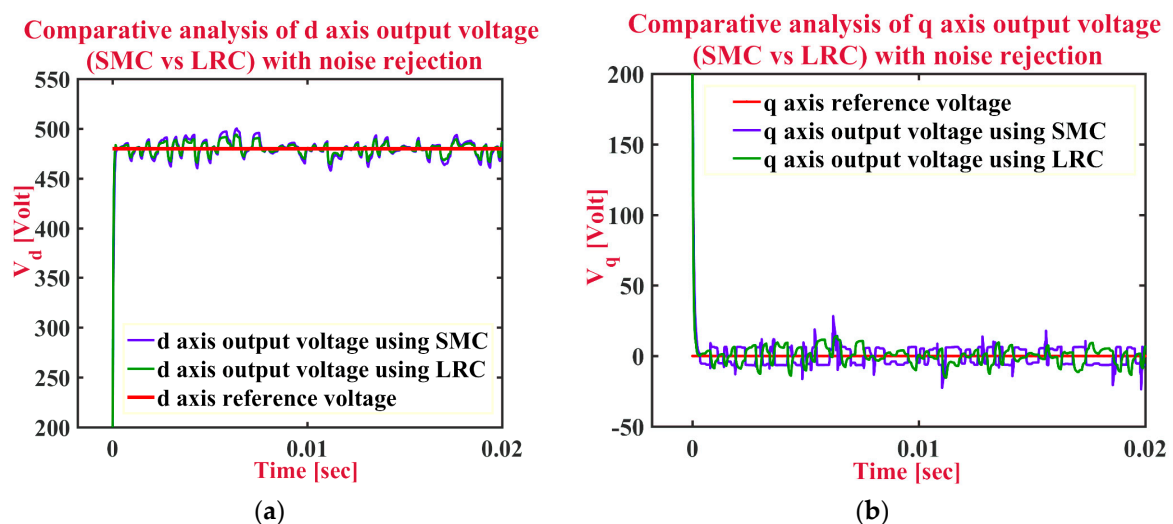


Figure 9. Comparison of performance between SMC (blue colored) and LRC (green colored) for normal condition in case of (a) d -axis output voltage; (b) q -axis output voltage considering CPL power variation and parametric uncertainties. LRC controller shows considerably better performance than SMC by staying closer to the reference voltage.

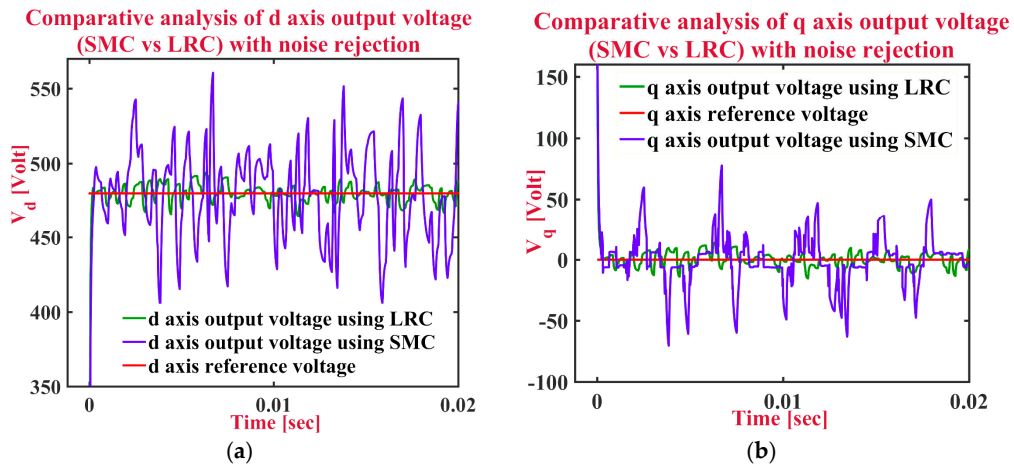


Figure 10. Comparison of performance between SMC (blue colored) and LRC (green colored) for very noisy environment in case of (a) *d*-axis output voltage; (b) *q*-axis output voltage considering CPL power variation and parametric uncertainties. LRC controller shows far better performance than SMC, as the latter shows high fluctuations from the reference voltage, while LRC stays close to it.

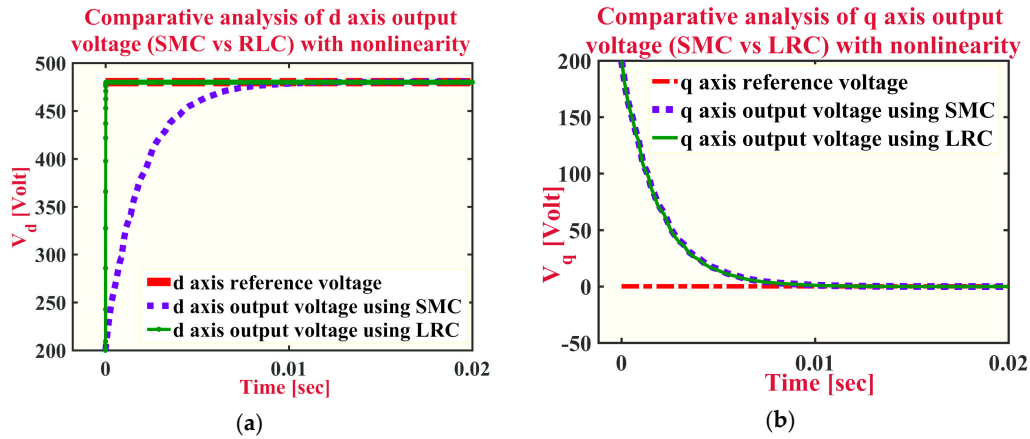


Figure 11. Comparison of performance between SMC (colored in blue) and LRC (colored in green) for nonlinearity in case of (a) *d*-axis output voltage, (b) *q*-axis output voltage. Unlike SMC, LRC is capable of attaining the reference *d*-axis value with negligible time-delay.

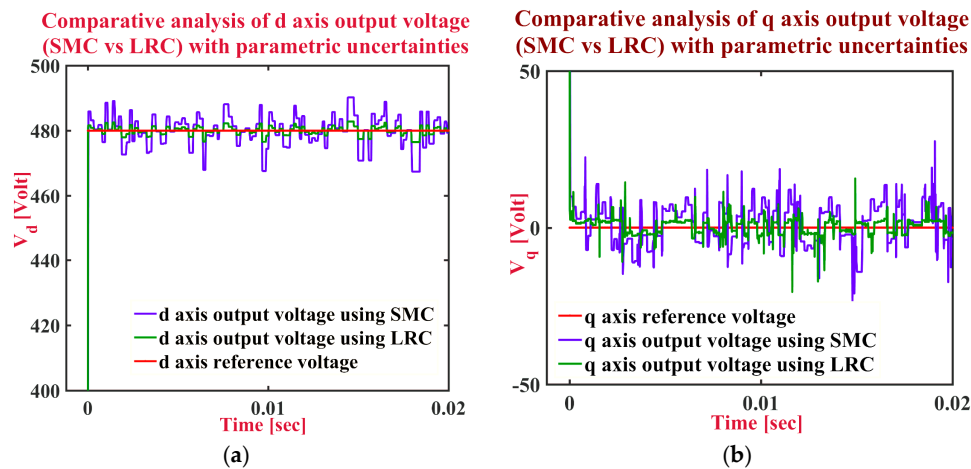


Figure 12. Comparison of performance between SMC (colored in blue) and LRC (colored in green) in case of (a) *d*-axis output voltage, (b) *q*-axis output voltage considering parametric uncertainties. LRC controller shows considerably better performance than SMC by staying closer to the reference voltage.

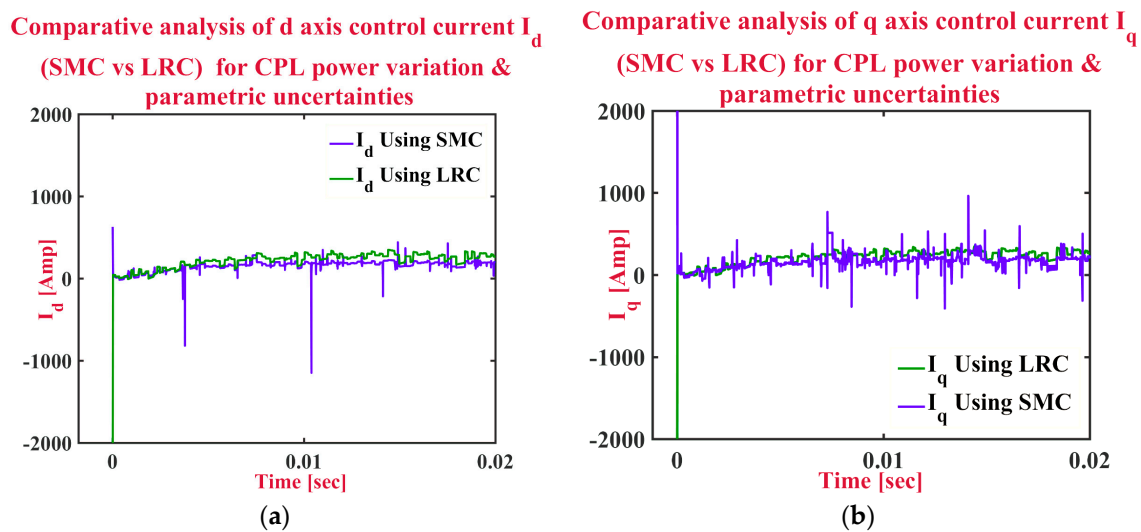


Figure 13. Comparison of performance among SMC (colored in blue) and LRC (colored in green) in case of (a) d -axis control input current, $I_d (u_1)$; (b) q -axis control input current, $I_q (u_2)$ considering CPL power variation and parametric uncertainties. LRC fluctuated less than SMC, causing less stress on the system and thus providing a longer lifetime.

Table 2. Mean squared error (MSE) values of SMC and LRC controllers for the different conditions.

Conditions	Parameter	Mean Squared Error		Relative Error (SMC-LRC)
		SMC	LRC	
Noise Rejection (normal condition)	X_3, d -axis voltage	0.00270320	0.00139074	1.31246×10^{-3}
	X_4, q -axis voltage	0.00138790	0.00113038	2.5752×10^{-4}
Noise Rejection (very noisy condition)	X_3, d -axis voltage	0.03661991	0.00139411	3.52258×10^{-2}
	X_4, q -axis voltage	0.00818637	0.00112001	7.06636×10^{-3}
Nonlinearity	X_3, d -axis voltage	0.00321589	0.00002730	3.18859×10^{-3}
	X_4, q -axis voltage	0.00942499	0.00924679	1.782×10^{-4}
Parameter Uncertainty	X_3, d -axis voltage	0.00116666	0.00011259	1.04076×10^{-3}
	X_4, q -axis voltage	0.00126333	0.00017554	1.08779×10^{-3}

6. Reason behind Inferior SMC Performance and Solutions

Sliding Mode Control presents many fascinating challenges to the mathematicians. It is also extensively used in engineering applications because of the comparatively easy implementation which does not require a deep understanding of the complex mathematical background. These two reasons put it in a unique position among control theories. There are three main stages of designing a Sliding Mode Controller: designing the sliding surface, selecting the control law that will hold the system trajectory on the sliding surface, and implementing in a chatter-free setup—which is the most important one of these three. Although in theory, Sliding Mode Control is a robust one, experiments show otherwise—SMC has some serious shortcomings. The most prominent one of them is chattering—the high frequency oscillation around the sliding surface. It reduces the control performance significantly. As an example, the following second-order system can be considered:

$$\dot{x}_1 = x_2, \quad (85)$$

$$\dot{x}_2 = ax_1 + bx_2 + csinx_1 + du, \quad (86)$$

a and b are negative constant values here whereas c and d are positive constants. For $c > |a|$, the system is known to be unstable. For the actuator, existence of fast dynamics is posited, and it is stable. These are not considered in the ideal model. The equations governing them are:

$$w_1 = w, \tag{87}$$

$$\dot{w}_1 = w_2, \tag{88}$$

$$\dot{w}_2 = -\frac{1}{\mu^2}w_1 - \frac{2}{\mu}w_2 + \frac{1}{\mu^2}u, \tag{89}$$

μ is a constant, considered to have a positive, sufficiently small value. As demonstrated in Figure 14, with actuator unmodeled dynamics present, $w(t)$ is the actual input of the system, not $u(t)$ directly from the sliding mode controller. The sliding mode surface and the control input is chosen as:

$$u = -M\text{sign}(\sigma), \tag{90}$$

$$\sigma = \lambda x_1 + x_2, \tag{91}$$

where λ and M are positive constants, with M is required to be large enough to enforce sliding mode into the ideal model ($\dot{\sigma} > 0$). \dot{x} becomes a continuous time function in real system, thus making the expectation of sliding mode to occur invalid; and causes chatter.

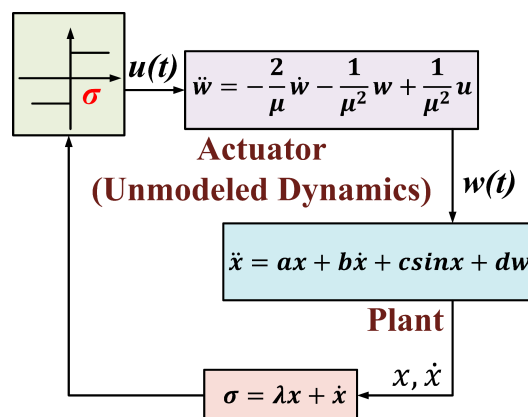


Figure 14. An example system demonstrating sliding mode control for systems as described in Equations (85) and (86). There are actuator dynamics that are not included in the ideal system. Chattering is caused from the excitation of these unmodeled dynamics by the high frequency switching action.

According to theory, the unmodeled dynamics present in the system causes the chattering effect. A sliding mode control, which is “chattering free”, is not attainable as the model used in designing the controller can never capture all the system dynamics. But, the chattering can be curtailed. The sliding mode is normally implemented with a relay—which represents the sign function. It creates a common problem with relative degree equal to one. An alternative to this approach is using approximations of the sign function, which is widely used. Sigmoids, saturation, and hysteresis functions are used often too, providing a continuous or smooth control signal, but also losing the invariance property of the sliding mode control along the way. Table 3 shows some methods to improve the effectiveness of SMC. Fuzzy Sliding Mode Control (FSMC)—which uses a low pass filter, and estimates the sliding variable through a disturbance estimator—is the one with the least effectiveness. Integral Sliding Mode Control (ISMC), High Order Sliding Mode (HOSM), and Sliding Mode Extended State Observer (SMESO) offers better effectiveness. However, Type-2 Fuzzy-Neural Network Indirect Adaptive Sliding Mode

Control (T2FNNAS) is the way to achieve the best performance, which is based on the synthesis approach of Lyapunov [52,53].

Table 3. Methods to improve SMC technique.

Technique Name	Base of the Technique	Working Principle	Effectiveness
ISMC	Has a equal dimension to the state space	Control signal composed by a linear term with a continuous low excitation of the unmodeled dynamics	**
HOSM	High-gain control with saturations used for overcoming the effect of chattering by approximation of the sign function within a boundary layer around the switching manifold	The order of the mode is determined by the smoothness of tangency of the sliding manifold	**
T2FNNAS	Type-2 Fuzzy Neural Network	Based on the synthesis method Lyapunov, the adaptive FNN's free parameters are tuned on-line	***
SMESO	Extended state observer with active disturbance rejection control	Dramatically reduced chattering phenomenon on the control input channel with respect to Linear Extended State Observer	**
FSMC	Low pass filter	Estimation of the sliding variable via a disturbance estimator	*

*** = Excellent, ** = Satisfactory, * = Acceptable.

7. Numerical Verification of Results for Microgrid Application

The results obtained so far demonstrate the capabilities of both SMC and LRC to maintain microgrid stability. To ascertain the effectiveness of these methods in real-life conditions, both of them are simulated numerically with data obtained from physical microgrids. These simulations confirm the efficacy of these control systems to sustain stability in real microgrids.

7.1. SMC Technique

To verify the global stability, we have to calculate the equation below:

$$\dot{V} = s(d + v), \quad (92)$$

where,

$$d = \frac{1}{c}\Delta x_1 + \omega\Delta x_4 - \frac{1}{c}d_p, \quad (93)$$

$$v = -dmax * sat\left(\frac{s}{\varepsilon}\right); \varepsilon > 0, \quad (94)$$

So,

$$\dot{V} = s\left(\frac{1}{c}\Delta x_1 + \omega\Delta x_4 - \frac{1}{c}d_p - dmax * sat\left(\frac{s}{\varepsilon}\right)\right), \quad (95)$$

where,

$$dmax = \frac{1}{c}\delta_{x1} + \omega\delta_{x4} - \frac{1}{c}\delta_p / \delta_{x3}, \quad (96)$$

Putting these all together,

$$\dot{V} = s\left(\frac{1}{c}\Delta x_1 + \omega\Delta x_4 - \frac{1}{c}d_p - \left(\frac{1}{c}\delta_{x1} + \omega\delta_{x4} - \frac{1}{c}\delta_p / \delta_{x3}\right) * sat\left(\frac{s}{\varepsilon}\right)\right), \quad (97)$$

Now let,

$$\omega = 60 \text{ Hz}, \Delta x_1 = 200 \text{ A}, \Delta x_4 = 50 \text{ V}, d_p = 50 \text{ A}, \delta_{x1} = 4000 \text{ A}, \delta_{x3} = 100 \text{ A}, \delta_{x4} = 100 \text{ V},$$

$$\delta_P = 30 \text{ kW}, \varepsilon = 100, c = 10 \mu\text{F}$$

Putting these values, we get:

$$\dot{V} = s \left(\frac{1}{10\mu} (200) + (60)(50) - \frac{1}{10\mu} (50) - \left(\frac{1}{10\mu} (4000) + (60)(100) - \frac{1}{10\mu} \left(\frac{30k}{100} \right) \right) * \text{sat} \left(\frac{s}{100} \right) \right), \quad (98)$$

$$\dot{V} = s \left[15.003 \times 10^6 - [370.006 \times 10^6] \text{sat} \left(\frac{s}{100} \right) \right], \quad (99)$$

Now, if s is either positive or negative, we will obtain $\dot{V} \leq 0$, which guarantees global stability.

7.2. LRC Technique

We have,

$$\dot{V} = e_2 \dot{e}_2, \quad (100)$$

where,

$$\dot{e}_2 = \left(\omega x_4 + \frac{1}{c} x_1 - \frac{1}{c} \frac{P_0}{x_3} - \frac{1}{c} x_5 - \frac{1}{c} u_0 - \dot{x}_{3d} \right) + \left(\frac{1}{c} v + d \right), \quad (101)$$

And here,

$$v = -c * dmax * \text{sat} \left(\frac{dmax * w}{\mu} \right), \quad (102)$$

$$d = \Delta \omega n_4 + \Delta \omega x_4 + \omega n_4 + \frac{1}{c} \Delta x_1 - \frac{1}{c} (n_5 + \Delta x_5) - \frac{1}{c} d_P, \quad (103)$$

And,

$$dmax = \frac{1}{c} \delta_{x1} + \delta_\omega \delta_{n4} + \delta_\omega \delta_{x4} + \omega \delta_{n4} - \frac{1}{c} \delta_5 - \frac{1}{c} \delta_P / \delta_{x3}, \quad (104)$$

If we choose

$$u_0 = -c \left[\frac{1}{c} \frac{P_0}{x_3} - \omega \hat{x}_4 + \frac{1}{c} x_5 + \dot{x}_{3d} - k_1 e_1 - k_2 e_2 \right], \quad (105)$$

Putting it all together,

$$\dot{V} = e_2 \left(\left(\omega x_4 + \frac{1}{c} x_1 - \frac{1}{c} \frac{P_0}{x_3} - \frac{1}{c} x_5 - \frac{1}{c} u_0 - \dot{x}_{3d} \right) + \left(\frac{1}{c} \left(-c * dmax * \text{sat} \left(\frac{dmax * w}{\mu} \right) \right) + (\Delta \omega n_4 + \Delta \omega x_4 + \omega n_4 + \frac{1}{c} \Delta x_1 - \frac{1}{c} (n_5 + \Delta x_5) - \frac{1}{c} d_P) \right) \right), \quad (106)$$

$$\begin{aligned} \dot{V} = e_2 \left(\left(\omega x_4 + \frac{1}{c} x_1 - \frac{1}{c} \frac{P_0}{x_3} - \frac{1}{c} x_5 - \frac{1}{c} \left(-c \left[\frac{1}{c} \frac{P_0}{x_3} - \omega \hat{x}_4 + \frac{1}{c} x_5 + \dot{x}_{3d} - k_1 e_1 - k_2 e_2 \right] \right) - \dot{x}_{3d} \right) \right. \\ \left. + \left(\frac{1}{c} \left(-c * \left(\frac{1}{c} \delta_{x1} + \delta_\omega \delta_{n4} + \delta_\omega \delta_{x4} + \omega \delta_{n4} - \frac{1}{c} \delta_5 - \frac{1}{c} \delta_P / \delta_{x3} \right) \right) \right. \right. \\ \left. \left. * \text{sat} \left(\frac{\left(\frac{1}{c} \delta_{x1} + \delta_\omega \delta_{n4} + \delta_\omega \delta_{x4} + \omega \delta_{n4} - \frac{1}{c} \delta_5 - \frac{1}{c} \delta_P / \delta_{x3} \right) * w}{\mu} \right) \right) \right) \\ \left. + (\Delta \omega n_4 + \Delta \omega x_4 + \omega n_4 + \frac{1}{c} \Delta x_1 - \frac{1}{c} (n_5 + \Delta x_5) - \frac{1}{c} d_P) \right) \end{aligned} \quad (107)$$

Now let,

$\omega = 60 \text{ Hz}$, $x_3 = 600 \text{ V}$, $x_4 = 10 \text{ V}$, $\Delta x_1 = 200 \text{ A}$, $\Delta x_2 = 200 \text{ A}$, $\Delta x_5 = 10 \text{ A}$, $n_3 = 50 \text{ V}$, $n_4 = 50 \text{ V}$, $n_5 = 30 \text{ A}$, $n_6 = 30 \text{ A}$, $\Delta \omega = 10 \text{ Hz}$, $d_P = 50 \text{ A}$, $d_Q = 20 \text{ A}$, $\delta_{x1} = 4000 \text{ A}$, $\delta_{x3} = 200 \text{ A}$, $\delta_{x4} = 100 \text{ V}$, $\delta_\omega = 70 \text{ Hz}$, $\delta_P = 30 \text{ kW}$, $\delta_Q = 20 \text{ Var}$, $\delta_{n3} = \delta_{n4} = \delta_{n5} = \delta_{n6} = 100 \text{ A}$, $\rho_{x3} = 200 \text{ V}$, and $\mu = 100$, $\delta_{x5} = 50 \text{ A}$, $\delta_{x6} = 3 \text{ A}$, $\delta_5 = 150 \text{ A}$ and $\delta_6 = 13 \text{ A}$, $c = 10 \mu\text{F}$.

Putting the values, we get:

$$\begin{aligned} \dot{V} = e_2 & \left((-100)(600 - 480) - (20)(0) \right) + \left(\frac{1}{10\mu} (-10\mu * \left(\frac{1}{10\mu} (4000) + (70)(100) \right. \right. \\ & \left. \left. + (70)(100) + (60)(100) - \frac{1}{10\mu} (150) - \frac{1}{10\mu} \left(\frac{30k}{200} \right) \right) \right) \\ & * sat \left(\frac{\left(\frac{1}{10\mu} (4000) + (70)(100) + (70)(100) + (60)(100) - \frac{1}{10\mu} (150) - \frac{1}{10\mu} \left(\frac{30k}{200} \right) \right) * (60)}{100} \right) \\ & \left. + \left((10)(50) + (10)(10) + (60)(50) + \frac{1}{10\mu} (100) - \frac{1}{10\mu} (30 + 10) - \frac{1}{10\mu} (50) \right) \right), \end{aligned} \quad (108)$$

$$\dot{V} = e_2 [988900 - [370.02 \times 10^6] * sat(222.012 \times 10^6)] \quad (109)$$

As we are getting $\dot{V} \leq 0$ from this equation, the system is globally stable.

8. Conclusions

A microgrid system has several advantages over the conventional utility grid system, such as unlimited renewable fuel resources, environment-friendly power generation, easy implementation, cost effectiveness, and so on. However, the maintenance of the microgrid electrification has been confronted by the challenge of continually increasing instability issues due to the growth of modern electronic devices. For improving the stability scenario of the microgrid system despite the presence of dense CPL loads, a storage-based load side compensation technique has been adopted in this paper. Besides that, Sliding Mode Controller (SMC) and Lyapunov Redesign Controller (LRC), two of the most prominent nonlinear control techniques, have been implemented individually to retain microgrid system stability. After that, SMC and LRC controller robustness analysis have been presented with the variation of CPL power. Next, the comparative analysis between the SMC controller and the LRC controller robustness has been illustrated which ascertains that Lyapunov Redesign Controller has a superior performance than the former one to retain microgrid stability in dense CPL-loaded conditions. Reasons for inferior SMC performance and ways to overcome them have been discussed afterwards, followed by numerical analysis of both of the control techniques to verify their performance in real microgrids. All the necessary results have been simulated in Matlab/Simulink platform with appreciable aftermath.

Acknowledgments: No funding has been received for this research project.

Author Contributions: All the authors contributed equally for the research article to be decimated in its current version.

Conflicts of Interest: The authors declare no conflict of interest.

References

1. Bayindir, R.; Hossain, E.; Kabalci, E.; Perez, R. A comprehensive study on microgrid technology. *Int. J. Renew. Energy Res.* **2014**, *4*, 1094–1107.
2. Hossain, E.; Kabalci, E.; Bayindir, R.; Perez, R. Microgrid testbeds around the world: State of art. *Energy Convers. Manag.* **2014**, *86*, 132–153. [[CrossRef](#)]
3. Reddy, K.R.; Babu, N.R.; Sanjeevikumar, P. A review on grid codes and reactive power management in power grids with wecs. In *Advances in Smart Grid and Renewable Energy*; Springer: Berlin, Germany, 2018; pp. 525–539.
4. Un-Noor, F.; Padmanaban, S.; Mihet-Popa, L.; Mollah, M.N.; Hossain, E. A comprehensive study of key electric vehicle (ev) components, technologies, challenges, impacts, and future direction of development. *Energies* **2017**, *10*, 1217. [[CrossRef](#)]
5. Ganesan, S.; Padmanaban, S.; Varadarajan, R.; Subramaniam, U.; Mihet-Popa, L. Study and analysis of an intelligent microgrid energy management solution with distributed energy sources. *Energies* **2017**, *10*, 1419. [[CrossRef](#)]

6. AL-Nussairi, M.K.; Bayindir, R.; Padmanaban, S.; Mihet-Popa, L.; Siano, P. Constant power loads (cpl) with microgrids: Problem definition, stability analysis and compensation techniques. *Energies* **2017**, *10*, 1656. [[CrossRef](#)]
7. Mihet-Popa, L.; Isleifsson, F.; Groza, V. Experimental Testing for Stability Analysis of Distributed Energy Resources Components with Storage Devices and Loads. In Proceedings of the 2012 IEEE International Instrumentation and Measurement Technology Conference, Graz, Austria, 13–16 May 2012; pp. 588–593.
8. Mihet-Popa, L.; Han, X.; Bindner, H.; Pihl-Andersen, J.; Mehmedalic, J. Development and Modeling of different scenarios for a Smart Distribution Grid. In Proceedings of the 2013 IEEE 8th International Symposium on Applied Computational Intelligence and Informatics, Timisoara, Romania, 23–25 May 2013; pp. 257–261.
9. Mihet-Popa, L.; Zong, Y.; You, S.; Groza, V. Simulation Platform Developed to Study and Identify Critical Cases in a Future Smart Grid. In Proceedings of the 2016 IEEE Electrical Power and Energy Conference (EPEC), Ottawa, ON, Canada, 12–14 October 2016.
10. Camacho, O.M.F.; Nørgård, P.B.; Rao, N.; Mihet-Popa, L. Electrical Vehicle Batteries Testing in a Distribution Network using Sustainable Energy. *IEEE Trans. Smart Grid* **2014**, *5*, 1033–1042. [[CrossRef](#)]
11. Emadi, A.; Khaligh, A.; Rivetta, C.H.; Williamson, G.A. Constant power loads and negative impedance instability in automotive systems: Definition, modeling, stability, and control of power electronic converters and motor drives. *IEEE Trans. Veh. Technol.* **2006**, *55*, 1112–1125. [[CrossRef](#)]
12. Jelani, N.; Molinas, M.; Bolognani, S. Reactive power ancillary service by constant power loads in distributed ac systems. *IEEE Trans. Power Deliv.* **2013**, *28*, 920–927. [[CrossRef](#)]
13. Rahimi, A.M.; Williamson, G.A.; Emadi, A. Loop-cancellation technique: A novel nonlinear feedback to overcome the destabilizing effect of constant-power loads. *IEEE Trans. Veh. Technol.* **2010**, *59*, 650–661. [[CrossRef](#)]
14. Huddy, S.R.; Skufca, J.D. Amplitude death solutions for stabilization of dc microgrids with instantaneous constant-power loads. *IEEE Trans. Power Electron.* **2013**, *28*, 247–253. [[CrossRef](#)]
15. Kwasinski, A.; Onwuchekwa, C.N. Dynamic behavior and stabilization of dc microgrids with instantaneous constant-power loads. *IEEE Trans. Power Electron.* **2011**, *26*, 822–834. [[CrossRef](#)]
16. Sanchez, S.; Molinas, M. Large signal stability analysis at the common coupling point of a dc microgrid: A grid impedance estimation approach based on a recursive method. *IEEE Trans. Energy Convers.* **2015**, *30*, 122–131. [[CrossRef](#)]
17. Wu, M.; Lu, D.D.-C. A novel stabilization method of lc input filter with constant power loads without load performance compromise in dc microgrids. *IEEE Trans. Ind. Electron.* **2015**, *62*, 4552–4562. [[CrossRef](#)]
18. Hossain, E.; Perez, R.; Nasiri, A.; Bayindir, R. Development of lyapunov redesign controller for microgrids with constant power loads. *Renew. Energy Focus* **2017**, *19*, 49–62. [[CrossRef](#)]
19. Hossain, E.; Perez, R.; Padmanaban, S.; Siano, P. Investigation on the development of a sliding mode controller for constant power loads in microgrids. *Energies* **2017**, *10*, 1086. [[CrossRef](#)]
20. Singh, S.; Fulwani, D.; Kumar, V. Robust sliding-mode control of dc/dc boost converter feeding a constant power load. *IET Power Electron.* **2015**, *8*, 1230–1237. [[CrossRef](#)]
21. Padmanaban, S.; Ozsoy, E.; Fedák, V.; Blaabjerg, F. Development of sliding mode controller for a modified boost cuk converter configuration. *Energies* **2017**, *10*, 1513. [[CrossRef](#)]
22. Stramosk, V.; Pagano, D.J. Nonlinear control of a bidirectional dc-dc converter operating with boost-type constant-power loads. In Proceedings of the 2013 Brazilian Power Electronics Conference (COBEP), Gramado, Brazil, 27–31 October 2013; IEEE: Piscataway, NJ, USA, 2013; pp. 305–310.
23. Gautam, A.R.; Singh, S.; Fulwani, D. DC bus voltage regulation in the presence of constant power load using sliding mode controlled DC-DC bi-directional converter interfaced storage unit. In Proceedings of the 2015 IEEE First International Conference on DC Microgrids (ICDCM), Atlanta, GA, USA, 7–10 June 2015; IEEE: Piscataway, NJ, USA, 2015; pp. 257–262.
24. Singh, S.; Fulwani, D. On design of a robust controller to mitigate CPL effect—A DC micro-grid application. In Proceedings of the 2014 IEEE International Conference on Industrial Technology (ICIT), Busan, Korea, 26 February–1 March 2014; IEEE: Piscataway, NJ, USA, 2014; pp. 448–454.
25. Padmanaban, S.; Blaabjerg, F.; Wheeler, P.; Ojo, J.O.; Ertas, A.H. High-voltage dc-dc converter topology for pv energy utilization—Investigation and implementation. *Electr. Power Compon. Syst.* **2017**, *45*, 221–232. [[CrossRef](#)]

26. Liu, Z.; Liu, J.; Bao, W.; Zhao, Y. Infinity-norm of impedance-based stability criterion for three-phase ac distributed power systems with constant power loads. *IEEE Trans. Power Electron.* **2015**, *30*, 3030–3043. [[CrossRef](#)]
27. Emadi, A. Modeling of power electronic loads in ac distribution systems using the generalized state-space averaging method. *IEEE Trans. Ind. Electron.* **2004**, *51*, 992–1000. [[CrossRef](#)]
28. Sun, J. Small-signal methods for ac distributed power systems—A review. *IEEE Trans. Power Electron.* **2009**, *24*, 2545–2554.
29. Karimipour, D.; Salmasi, F.R. Stability analysis of ac microgrids with constant power loads based on popov's absolute stability criterion. *IEEE Trans. Circuits Syst. II Express Briefs* **2015**, *62*, 696–700. [[CrossRef](#)]
30. Vavilapalli, S.; Padmanaban, S.; Subramaniam, U.; Mihet-Popa, L. Power balancing control for grid energy storage system in photovoltaic applications—Real time digital simulation implementation. *Energies* **2017**, *10*, 928. [[CrossRef](#)]
31. Swaminathan, G.; Ramesh, V.; Umashankar, S.; Sanjeevikumar, P. Investigations of microgrid stability and optimum power sharing using robust control of grid tie pv inverter. In *Advances in Smart Grid and Renewable Energy*; Springer: Singapore, 2018; pp. 379–387.
32. Zheng, Q.; Wu, F. Lyapunov redesign of adaptive controllers for polynomial nonlinear systems. In Proceedings of the American Control Conference (ACC '09), St. Louis, MO, USA, 10–12 June 2009; IEEE: Piscataway, NJ, USA, 2009; pp. 5144–5149.
33. Chung, W.-C.; Liaw, D.-C.; Chang, S.-T. The steering control of vehicle dynamics via a lyapunov redesign approach. In Proceedings of the 48th IEEE Conference on Decision and Control, 2009 Held Jointly with the 2009 28th Chinese Control Conference (CDC/CCC 2009), Shanghai, China, 15–18 December 2009; IEEE: Piscataway, NJ, USA, 2009; pp. 6321–6326.
34. Memon, A.Y.; Khalil, H.K. Lyapunov redesign approach to output regulation of nonlinear systems using conditional servocompensators. In Proceedings of the American Control Conference, Seattle, WA, USA, 11–13 June 2008; IEEE: Piscataway, NJ, USA, 2008; pp. 395–400.
35. Farrell, J.A.; Polycarpou, M.M. *Adaptive Approximation Based Control: Unifying Neural, Fuzzy and Traditional Adaptive Approximation Approaches*; John Wiley & Sons: Chichester, UK, 2006; Volume 48.
36. Khalil, H.K. *Nonlinear Systems*; Prentice-Hall: Upper Saddle River, NJ, USA, 1996; Volume 2.
37. Vilathgamuwa, D.; Zhang, X.; Jayasinghe, S.; Bhangu, B.; Gajanayake, C.; Tseng, K.J. Virtual resistance based active damping solution for constant power instability in ac microgrids. In Proceedings of the IECON 2011—37th Annual Conference on IEEE Industrial Electronics Society, Melbourne, Australia, 7–10 November 2011; IEEE: Piscataway, NJ, USA, 2011; pp. 3646–3651.
38. Tiwari, R.; Babu, N.R.; Arunkrishna, R.; Sanjeevikumar, P. Comparison between pi controller and fuzzy logic-based control strategies for harmonic reduction in grid-integrated wind energy conversion system. In *Advances in Smart Grid and Renewable Energy*; Springer: Berlin, Germany, 2018; pp. 297–306.
39. Padmanaban, S.; Grandi, G.; Blaabjerg, F.; Wheeler, P.W.; Siano, P.; Hammami, M. A comprehensive analysis and hardware implementation of control strategies for high output voltage dc-dc boost power converter. *Int. J. Comput. Int. Syst.* **2017**, *10*, 140–152. [[CrossRef](#)]
40. Padmanaban, S.; Daya, F.J.; Blaabjerg, F.; Wheeler, P.W.; Szcześniak, P.; Oleschuk, V.; Ertas, A.H. Wavelet-fuzzy speed indirect field oriented controller for three-phase ac motor drive—investigation and implementation. *Eng. Sci. Technol. Int. J.* **2016**, *19*, 1099–1107. [[CrossRef](#)]
41. Febin Daya, J.L.; Subbiah, V.; Iqbal, A.; Padmanaban, S. Novel wavelet-fuzzy based indirect field oriented control of induction motor drives. *J. Power Electron.* **2013**, *13*, 656–668. [[CrossRef](#)]
42. Febin Daya, J.; Subbiah, V.; Sanjeevikumar, P. Robust speed control of an induction motor drive using wavelet-fuzzy based self-tuning multiresolution controller. *Int. J. Comput. Int. Syst.* **2013**, *6*, 724–738. [[CrossRef](#)]
43. Slotine, J.-J.E.; Li, W. *Applied Nonlinear Control*; Prentice Hall: Englewood Cliffs, NJ, USA, 1991; Volume 199.
44. Slotine, J.-J.E. Sliding controller design for non-linear systems. *Int. J. Control* **1984**, *40*, 421–434. [[CrossRef](#)]
45. Utkin, V.I. *Sliding Modes in Control and Optimization*; Springer Science & Business Media: Berlin/Heidelberg, Germany, 2013.
46. Sastry, S.S. *Nonlinear Systems: Analysis, Stability, and Control*; Springer Science & Business Media: New York, NY, USA, 2013; Volume 10.

47. Hung, J.Y.; Gao, W.; Hung, J.C. Variable structure control: A survey. *IEEE Trans. Ind. Electron.* **1993**, *40*, 2–22. [[CrossRef](#)]
48. Ning-Su, L.; Chun-Bo, F. A new method for suppressing chattering in variable structure feedback control systems. *IFAC Proc. Vol.* **1989**, *22*, 279–284. [[CrossRef](#)]
49. Loh, A.M.; Yeung, L. Chattering reduction in sliding mode control: An improvement for nonlinear systems. *WSEAS Trans. Circuits Syst.* **2004**, *3*, 2090–2097.
50. Freeman, R.; Kokotovic, P.V. *Robust Nonlinear Control Design: State-Space and Lyapunov Techniques*; Springer Science & Business Media: Boston, MA, USA, 2008.
51. Krishna S, M.; Daya JL, F.; Padmanaban, S.; Mihet-Popa, L. Real-time analysis of a modified state observer for sensorless induction motor drive used in electric vehicle applications. *Energies* **2017**, *10*, 1077. [[CrossRef](#)]
52. Sanjeevikumar, P.; Febin Daya, J.L.; Wheeler, P.; Blaabjerg, F.; Fedák, V.; Ojo, J.O. Wavelet Transform with Fuzzy Tuning Based Indirect Field Oriented Speed Control of Three-Phase Induction Motor Drive. In Proceedings of the 2015 International Conference on Electrical Drives and Power Electronics (EDPE), Tatranska Lomnica, Slovakia, 21–23 September 2015; pp. 111–116.
53. Hosseyni, A.; Trabelsi, R.; Iqbal, A.; Sanjeevikumar, P.; Mimouni, M.F. An Improved Sensorless Sliding Mode Control/Adaptive Observer of a Five-Phase Permanent Magnet Synchronous Motor Drive. *Int. J. Adv. Manuf. Technol.* **2017**, *93*, 1–11. [[CrossRef](#)]



© 2017 by the authors. Licensee MDPI, Basel, Switzerland. This article is an open access article distributed under the terms and conditions of the Creative Commons Attribution (CC BY) license (<http://creativecommons.org/licenses/by/4.0/>).